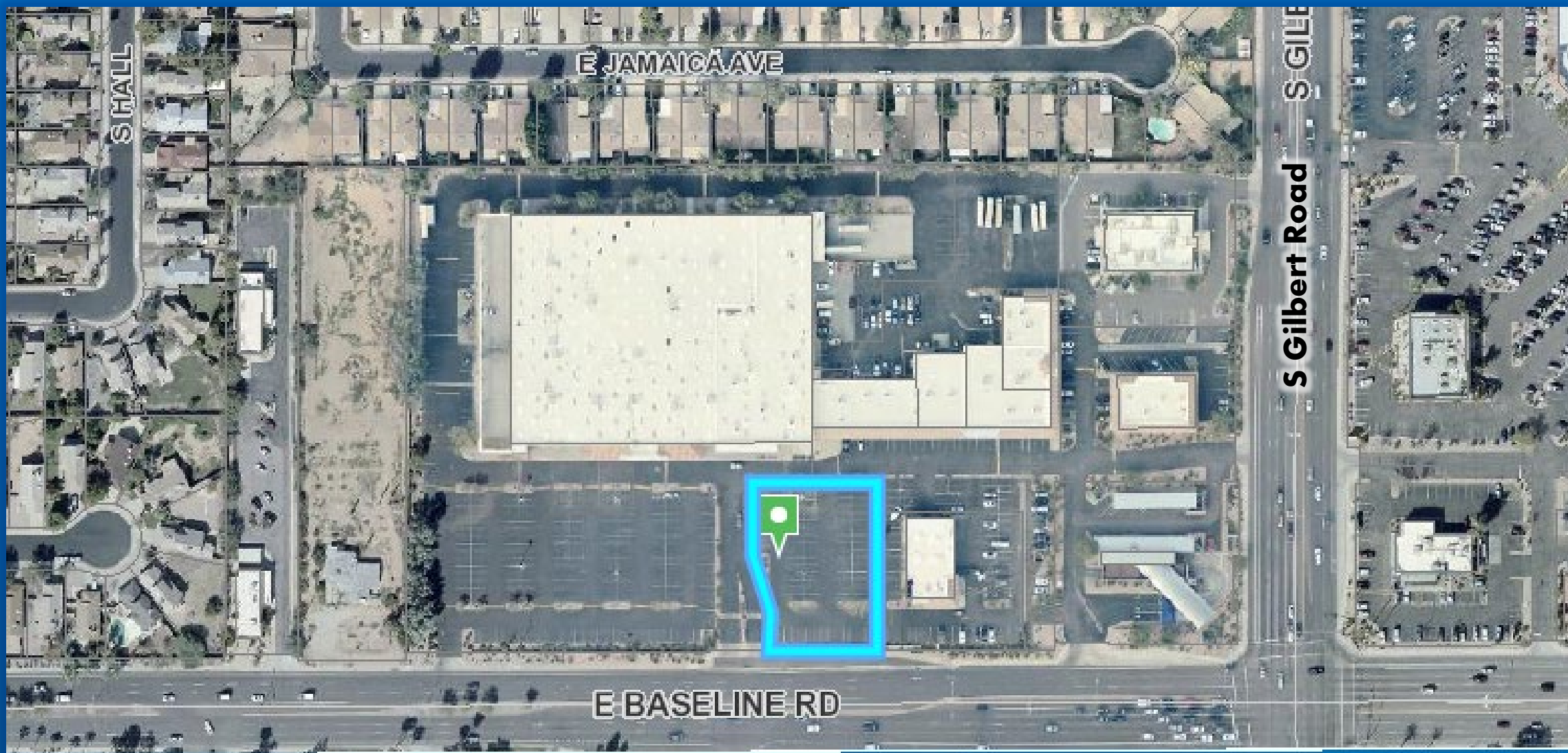


DESIGN REVIEW BOARD WORK SESSION

April 14, 2020

DRB20-00135



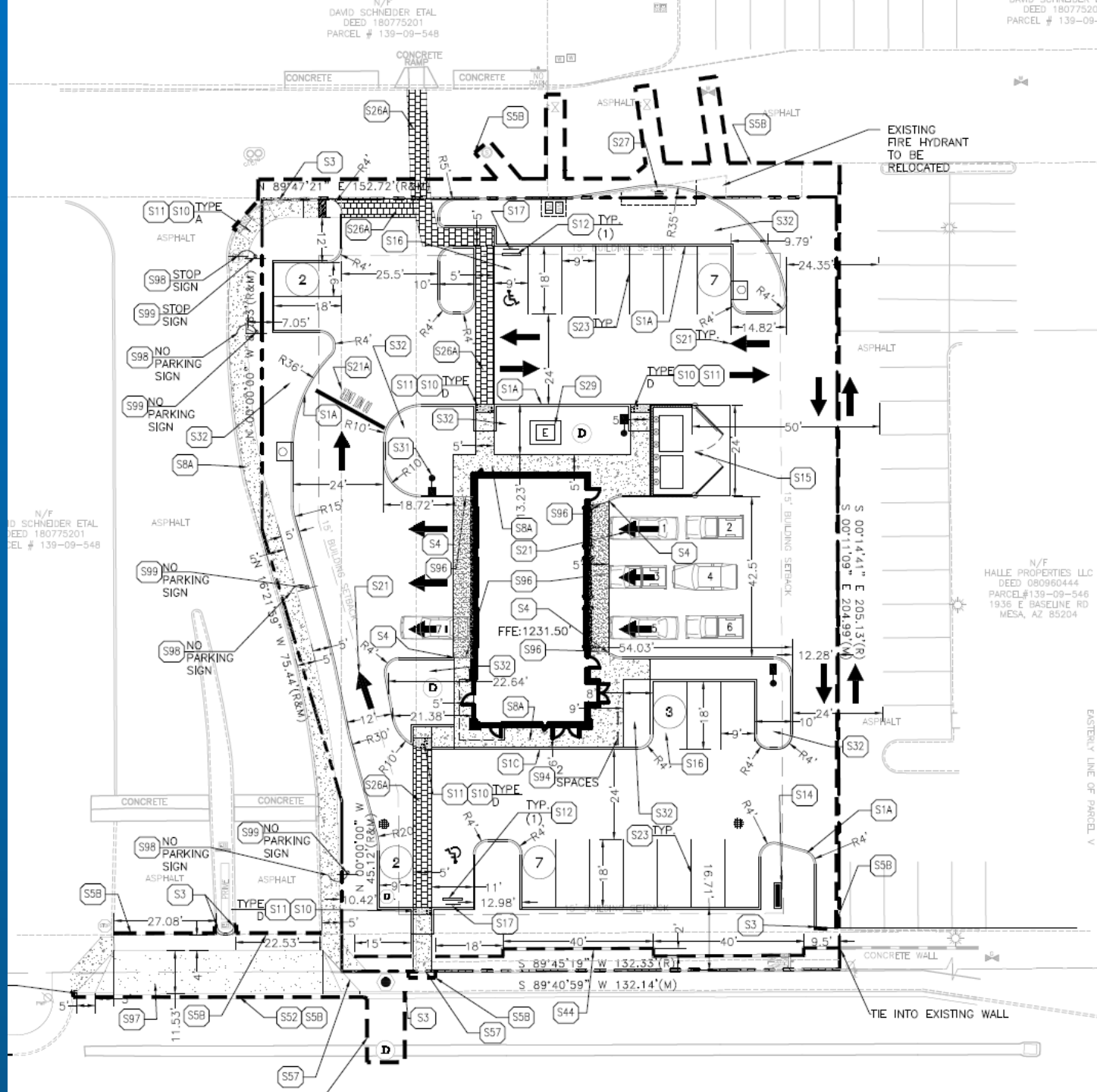


Looking north - from Baseline Road



Looking south - from within Mesa Commons Shopping Center

SITE PLAN

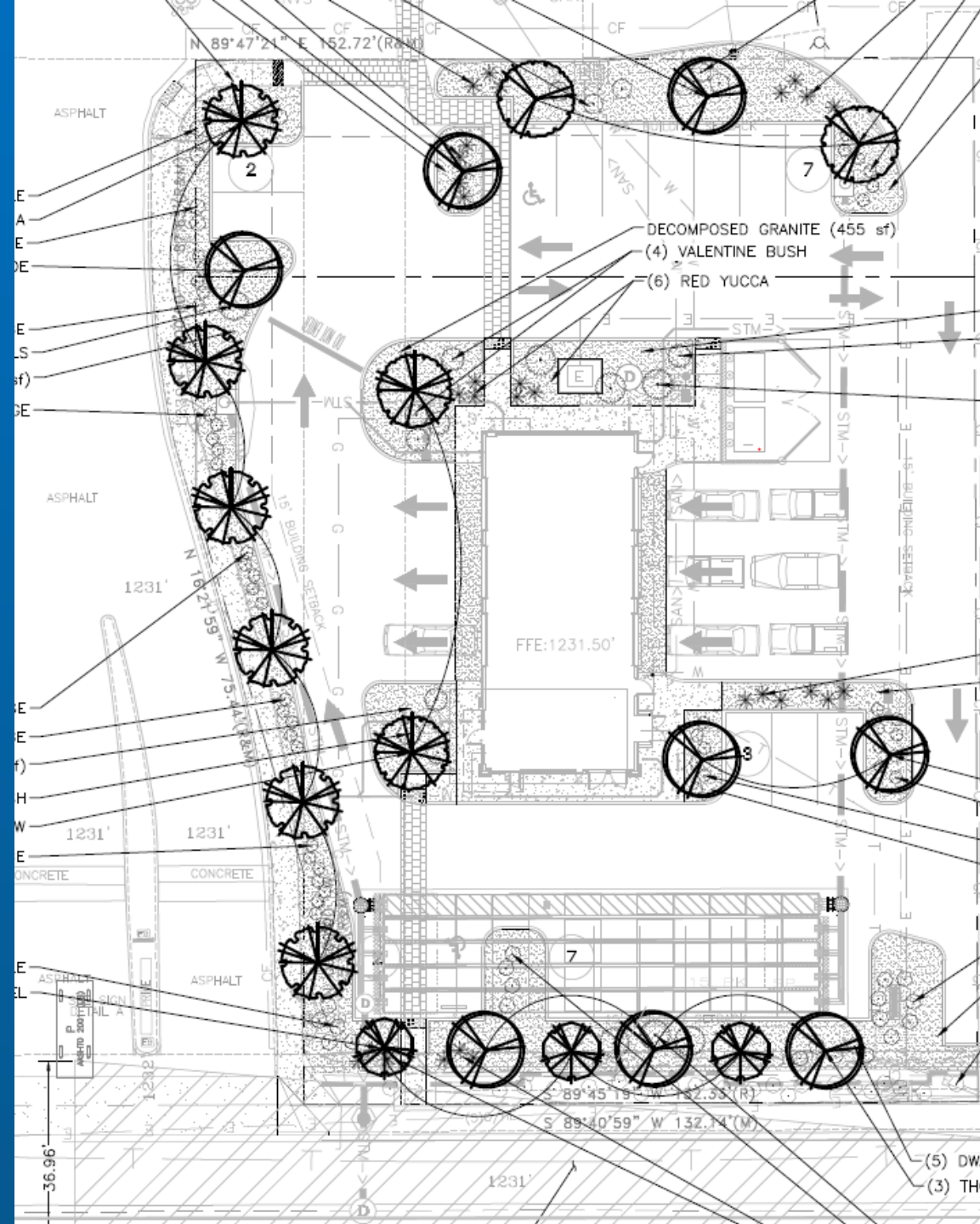


N/F
D. SCHNEIDER ETAL
DEED 180775201
PARCEL # 139-09-548

N/F
HALLE PROPERTIES LLC
DEED 080960444
PARCEL#139-09-548
1936 E BASELINE RD
MESA, AZ 85204

EASTERLY LINE OF PARCEL V

LANDSCAPE PLAN



PLANT SCHEDULE LANDSCAPE

| TREES | QTY | BOTANICAL / COMMON NAME | CONT |
|--------|-----|--|--------|
| | 6 | ACACIA STENOPHYLLA / SHOESTRING ACACIA | 24"BOX |
| | 8 | CERCIDIUM X 'DESERT MUSEUM' / THORNLESS PALO VERDE | 36"BOX |
| | 2 | CHILOPSIS LINEARIS 'PARADISE' / PARADISE DESERT WILLOW | 24"BOX |
| | 2 | PROSOPIS VELUTINA / VELVET MESQUITE | 24"BOX |
| | 3 | SOPHORA SECUNDIFLORA 'SILVER SIERRA' TM / SILVER TEXAS MOUNTAIN LAUREL | 24"BOX |
| SHRUBS | QTY | BOTANICAL / COMMON NAME | SIZE |
| | 6 | DODONAEA VISCOSA 'GREEN' / GREEN HOPSEED BUSH | 5 GAL |
| | 8 | EREMOPHILA MACULATA 'VALENTINE' / VALENTINE BUSH | 5 GAL |
| | 30 | HESPERALOE PARVIFLORA / RED YUCCA | 5 GAL |
| | 50 | LEUCOPHYLLUM LANGMANIAE 'RIO BRAVO' TM / RIO BRAVO LANGMAN'S SAGE | 5 GAL |
| | 31 | MYRTUS COMMUNIS 'COMPACTA' / DWARF MYRTLE | 5 GAL |
| | 7 | TECOMA X 'ORANGE JUBILEE' / ORANGE JUBILEE YELLOW BELLS | 5 GAL |

DECOMPOSED GRANITE 6,016 SF
 DECOMPOSED GRANITE OR D.G.: GRANULAR STONE SURFACING MATERIAL CONSISTING OF PARTICLE SIZES RANGING FROM 3/8" DOWN TO ROCK DUST. 2" MIN. D.G. TO COVER ALL LANDSCAPE AREAS. COLOR TO MATCH EXISTING ON SITE.

(5) DWARF MYRTLE
 (3) THORNLESS P



3 FRONT ELEVATION
STONE / BRICK / EIFS

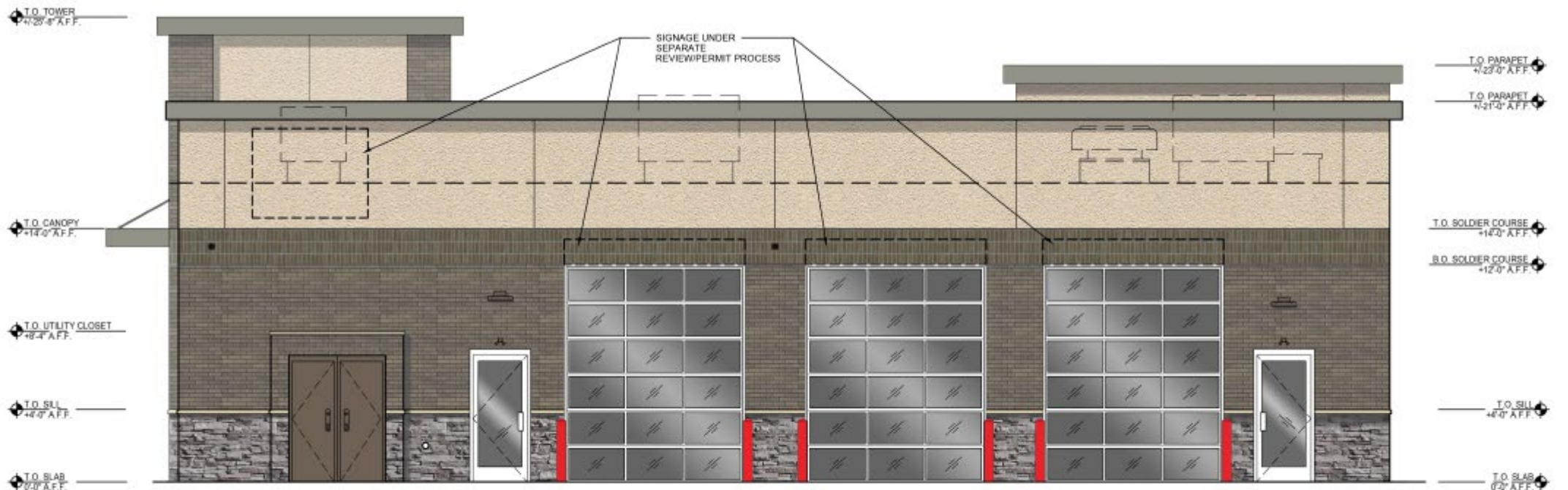
West Elevation

| EXTERIOR FINISHES | |
|--|--|
| EXTERIOR INSULATED FINISH SYSTEM : | DRYVIT (SANDPEBBLE FINE) COLOR: E.I.F.S. 1 = #113 AMARILLO WHITE |
| STONE WAINSCOT: (GRADE TO PRECAST SILL) | ELDORADO STONE - CLIFFSTONE PROFILE "BOARDWALK" GRAY DRY STACKED STONE |
| FACE BRICK: (ABOVE WAINSCOT) | BELDEN - "MODULAR HAMILTON BLEND A" |
| PRECAST SILL: | CUSTOM CAST STONE - "LIGHT BUFF" (REFER TO SILL PROFILE) |
| MORTAR: | LEHIGH - "LIGHT BEIGE" |
| MASONRY SEALER: | ALL MASONRY SURFACES SHALL BE TREATED W/SEALER REFER TO SPECIFICATIONS. |
| METAL CANOPY: | ANNEX CANOPY SYSTEM - COLOR TO MATCH PAC-CLAD "SILVER" |
| STOREFRONT SYSTEM: | 2x4 1/2" KAWNEER TRIFAB V0 451T SERIES CLEAR ANODIZED ALUMINUM STOREFRONT SYSTEM W/1" INSULATED GLAZING. |
| H.M. DOORS & FRAMES: | FIELD PAINT w/SHERWIN-WILLIAMS B66-310 PRO-CYRL PRIMER FOLLOWED BY (2) FINISH COATS OF B66-300 SHER-CYRL HPA. COLOR SHALL BE SW-7515 "HOMESTEAD BROWN". PROVIDE MOCK-UP AND VERIFY COLOR W/OWNER. |
| O.H. DOOR FINISH: | CLEAR ANODIZED ALUMINUM. |
| BOLLARDS/GUARD POSTS: | FIELD PAINT w/SHERWIN-WILLIAMS B66-310 PRO-CYRL PRIMER FOLLOWED BY (2) FINISH COATS OF B66-300 SHER-CYRL HPA. COLOR SHALL BE "VALVOLINE RED". |
| DUMPSTER ENCLOSURE GATE POSTS: | FIELD PAINT w/SHERWIN-WILLIAMS B66-310 PRO-CYRL AND PRIMER FOLLOWED BY (2) FINISH COATS OF SHERWIN WILLIAMS 7515 "HOMESTEAD BROWN". SEMI-GLOSS DTM ACRYLIC B66-200. |
| PARKING LOT STRIPING: | SHERWIN-WILLIAMS #TM226 SETFAST TM PAINT. COLOR SHALL BE "WHITE". |
| HANDICAP STALL STRIPING: | SHERWIN-WILLIAMS #TM2133 SETFAST TM PAINT. COLOR SHALL BE "ADA BLUE". |
| STORM DRAINAGE DOWNSPOUTS: | DOWNSPOUTS ARE INTERNAL AS PER THE RECOMMENDATION OF THE DESIGN REVIEW BOARD. |



1 RIGHT ELEVATION
STONE / BRICK / EIFS

South Elevation



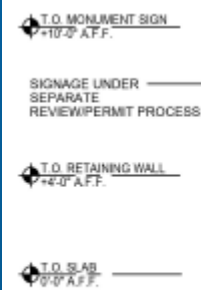
4 REAR ELEVATION
STONE / BRICK / EIFS

East Elevation

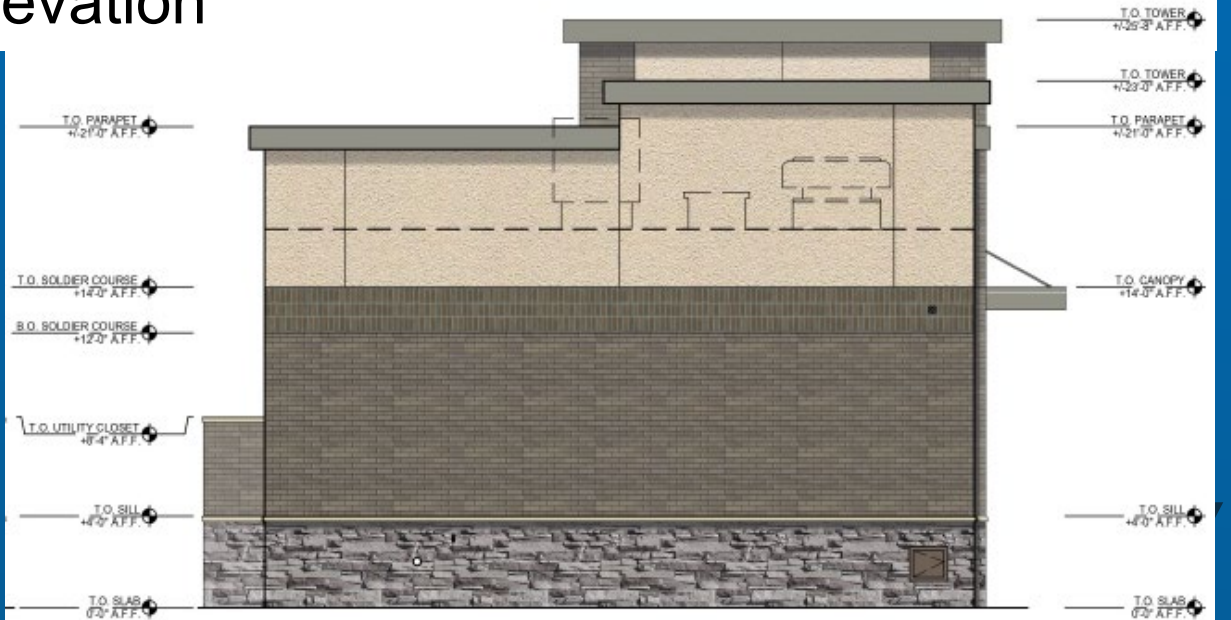


7 DUMPSTER SIDE ELEVATION
STONE / BRICK / EIFS

6 DUMPSTER FRONT ELEVATION
STONE / BRICK / EIFS



5 MONUMENT SIGN ELEVATIONS
STONE / BRICK / EIFS



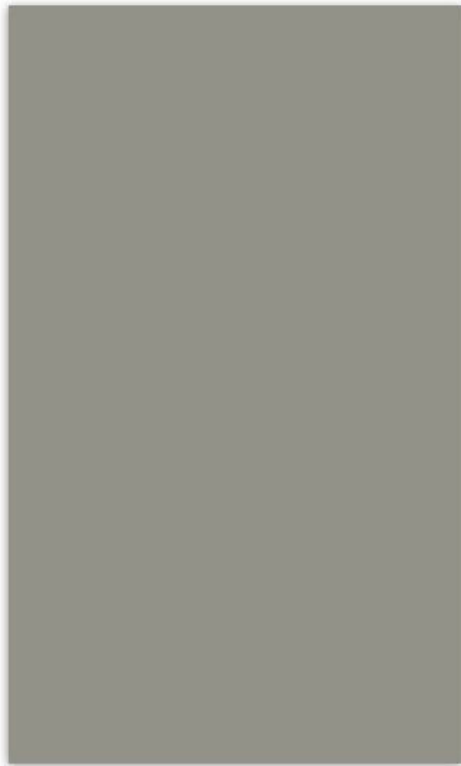
North Elevation

2 LEFT ELEVATION
STONE / BRICK / EIFS

MATERIAL BOARD



BELDEN BRICK &
SOLDIER COURSE



PAC CLAD
METAL CANOPY, COPING,
SOFFIT & TRIM



CUSTOM CAST STONE
PRECAST SILL



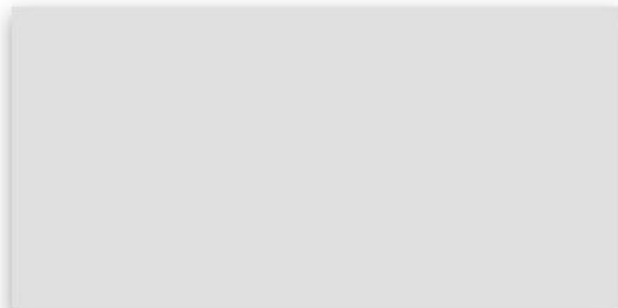
LEHIGH
MORTAR



ELDORADO
STONE VENEER
WAINSCOT



VIOC RED
BOLLARDS/
GUARDPOSTS



KAWNEER
STOREFRONT SYSTEM



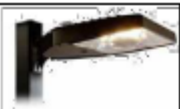
SHERWIN WILLIAMS
H.M. DOORS, FRAMES,
& DUMPSTER
ENCLOSURE GATE



DRYVIT
EXTERIOR INSULATED FINISH
SYSTEM (EIFS)



Ordering Number Logic Evolve™ LED Area Light (EALP)




EALP 01 7

| PROD. ID. | GENERATION | WINGS | OPTICAL DISTRIBUTION CODE | CB | ECT | EMPHASIS | CONTROLS | HOUSING FINISH | COLOR | OPTIONS |
|--|---------------------|---|--|--|--|--|--|--|--|--|
| E = Evolve AL = Area Light P = Pendant | 01 = 1st Generation | 0 = 100-200" 1 = 200" 2 = 200" 3 = 200" 4 = 200" 5 = 400" 6 = 400" N = 343-400" * Not available with Fluting, Hard-Coat, or Polycarbonate with Polycarbonate Lens | SW = Symmetric AF = Asymmetric Forward AR = Asymmetric Reverse AN = Asymmetric Nonside AA = Asymmetric AID | 0 = 30° beam 1 = 30° beam 2 = 30° beam 3 = 30° beam 4 = 30° beam 5 = 30° beam 6 = 30° beam 7 = 30° beam | 0 = 30° beam 1 = 30° beam 2 = 30° beam 3 = 30° beam 4 = 30° beam 5 = 30° beam 6 = 30° beam 7 = 30° beam | 0 = 30° beam 1 = 30° beam 2 = 30° beam 3 = 30° beam 4 = 30° beam 5 = 30° beam 6 = 30° beam 7 = 30° beam | 0 = 30° beam 1 = 30° beam 2 = 30° beam 3 = 30° beam 4 = 30° beam 5 = 30° beam 6 = 30° beam 7 = 30° beam | 0 = 30° beam 1 = 30° beam 2 = 30° beam 3 = 30° beam 4 = 30° beam 5 = 30° beam 6 = 30° beam 7 = 30° beam | 0 = 30° beam 1 = 30° beam 2 = 30° beam 3 = 30° beam 4 = 30° beam 5 = 30° beam 6 = 30° beam 7 = 30° beam | 0 = 30° beam 1 = 30° beam 2 = 30° beam 3 = 30° beam 4 = 30° beam 5 = 30° beam 6 = 30° beam 7 = 30° beam |

| OPTICAL CODE | DISTRIBUTION | TYPICAL INITIAL LUMENS | TYPICAL SYSTEM WATTAGE | BUDGETING WATTAGE | ES FILE NUMBER | ES FILE NUMBER | ES FILE NUMBER |
|--------------|--------------------|------------------------|------------------------|-------------------|----------------|----------------|----------------|
| C5 | Symmetric Polygon | 750 | 800 | 800 | ES-10-02 | ES-10-02 | ES-10-02 |
| C4 | Asymmetric Forward | 750 | 750 | 750 | ES-10-02 | ES-10-02 | ES-10-02 |

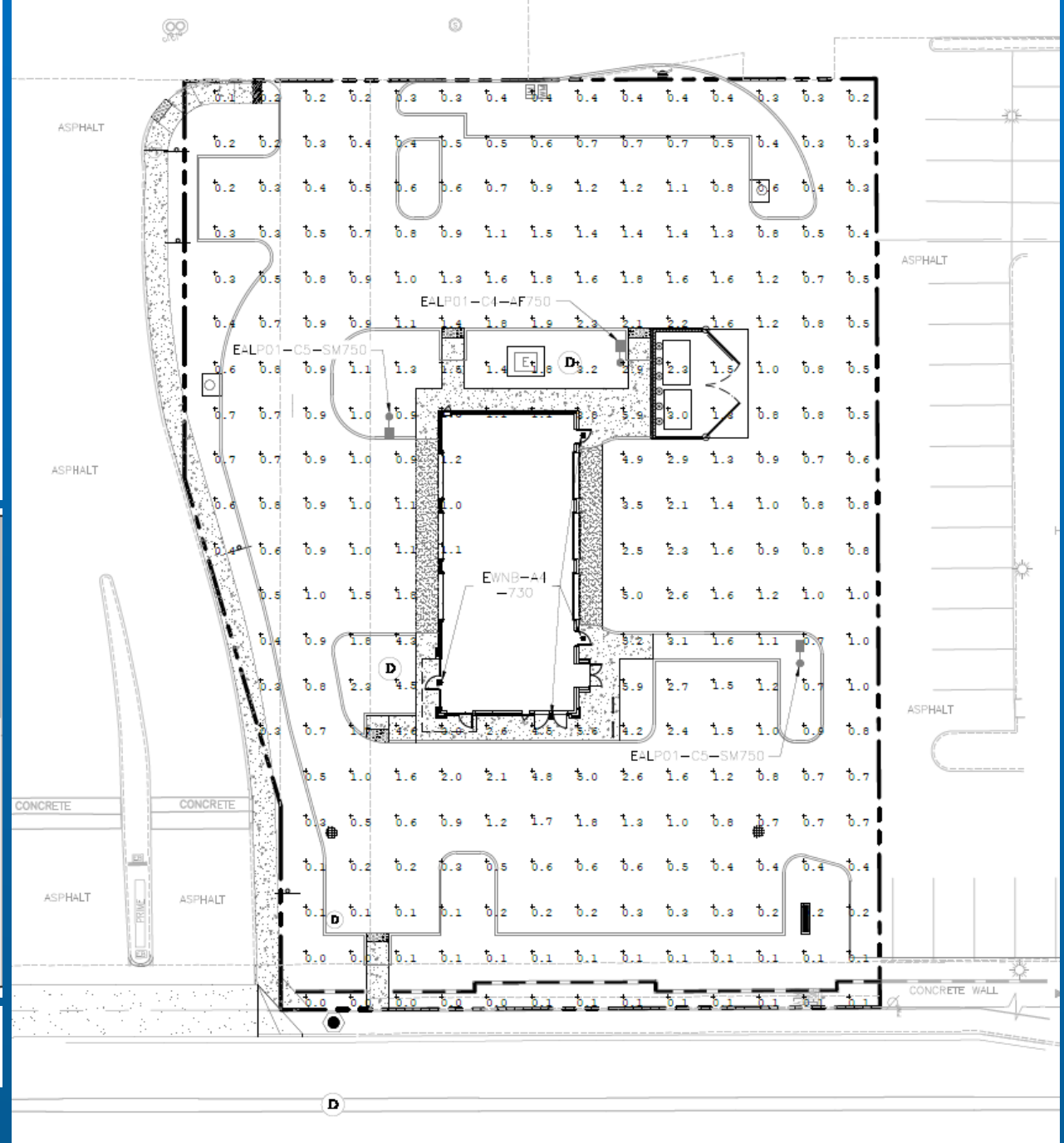
Ordering Number Logic Evolve LED Wall Pack N Series (EWNB)






EWN B 7

| PROD. ID. | GENERATION | WINGS | OPTICAL DISTRIBUTION CODE | CB | ECT | EMPHASIS | CONTROLS | HOUSING FINISH | COLOR | OPTIONS |
|--|---------------------|---|--|--|--|--|--|--|--|--|
| E = Evolve W = Wall Pack N = Nonside | 01 = 1st Generation | 0 = 100-200" 1 = 200" 2 = 200" 3 = 200" 4 = 200" 5 = 400" 6 = 400" N = 343-400" * Not available with Fluting, Hard-Coat, or Polycarbonate with Polycarbonate Lens | SW = Symmetric AF = Asymmetric Forward AR = Asymmetric Reverse AN = Asymmetric Nonside AA = Asymmetric AID | 0 = 30° beam 1 = 30° beam 2 = 30° beam 3 = 30° beam 4 = 30° beam 5 = 30° beam 6 = 30° beam 7 = 30° beam | 0 = 30° beam 1 = 30° beam 2 = 30° beam 3 = 30° beam 4 = 30° beam 5 = 30° beam 6 = 30° beam 7 = 30° beam | 0 = 30° beam 1 = 30° beam 2 = 30° beam 3 = 30° beam 4 = 30° beam 5 = 30° beam 6 = 30° beam 7 = 30° beam | 0 = 30° beam 1 = 30° beam 2 = 30° beam 3 = 30° beam 4 = 30° beam 5 = 30° beam 6 = 30° beam 7 = 30° beam | 0 = 30° beam 1 = 30° beam 2 = 30° beam 3 = 30° beam 4 = 30° beam 5 = 30° beam 6 = 30° beam 7 = 30° beam | 0 = 30° beam 1 = 30° beam 2 = 30° beam 3 = 30° beam 4 = 30° beam 5 = 30° beam 6 = 30° beam 7 = 30° beam | 0 = 30° beam 1 = 30° beam 2 = 30° beam 3 = 30° beam 4 = 30° beam 5 = 30° beam 6 = 30° beam 7 = 30° beam |

| OPTICAL CODE | DISTRIBUTION | TYPICAL INITIAL LUMENS | TYPICAL SYSTEM WATTAGE | BUDGETING WATTAGE | ES FILE NUMBER | ES FILE NUMBER | ES FILE NUMBER |
|--------------|--------------------|------------------------|------------------------|-------------------|----------------|----------------|----------------|
| A4 | Asymmetric Forward | 400 | 400 | 400 | ES-10-01 | ES-10-01 | ES-10-01 |



| Symbol | Qty | Label | Arrangement | Total Lamp Lumens | LLF | Description |
|---|-----|----------------|-------------|-------------------|-------|----------------|
|  | 4 | EWNB A4730 | SINGLE | N.A. | 1.000 | EWNB A4730 |
|  | 1 | EALP01 C4AF750 | SINGLE | N.A. | 1.000 | EALP01 C4AF750 |
|  | 2 | EALP01 C5SM750 | SINGLE | N.A. | 1.000 | EALP01 C5SM750 |

- ✓ At least three distinct materials on each façade
- ✓ Exterior walls are proportioned to human scale
- ✓ Changes in plane and texture
- ✓ Building height is varied
- ✓ Entries are framed
- ✓ No more than 50% of a total façade may be covered with one single material

- Staff recommends:
 - Replace the door on the south elevation with windows that extend to the faux column to the east
 - Provide foundation base plant material along the south elevation
- Staff welcomes any feedback on the proposed elevations

SUMMARY